



**MODEL HRFEBP FR**

**Fountain With Back Panel**



This fountain is certified to NSF/ANSI 61.

**GENERAL**

Face-mounted fountain, one-piece, non-corrosive series 300 stainless steel with brushed satin finish. Contour-formed basin with softly rounded corners and edges reduces splatter, insures proper drainage and prevents standing waste water. Designed to be easily accessible to both physically challenged and able-bodied individuals. Ideally suited for installation in public areas. Model meets state and federal requirements as defined by the Americans with Disabilities Act.

**FREEZE-RESISTANT VALVE SYSTEM**

Freeze-resistant system features box that installs behind non-freezing wall for housing water connection from the stop to the strainer.

**BUBBLER**

Vandal-resistant bubbler is one-piece, chrome-plated, and is secured to fountain with anti-rotation mounting system. Unit has integral hood guard design to prevent contamination from other users, airborne deposits and tampering.

**PUSHBUTTON ACTUATION MECHANISM**

Self-closing, vandal-resistant pushbutton does not require grasping or twisting.

**PANEL**

Constructed of stainless steel, number 300 series with satin finish.

**AUTOMATIC STREAM HEIGHT REGULATOR**

Self-closing assembly is located inside unit to prevent tampering. Unit resists corrosion and liming. A constant stream height is automatically maintained under line pressures that vary from 20 to 105 psi.

**INLET STRAINER**

Easily cleaned in-line strainer screen traps particles of 140 microns or larger before they enter the waterway.

**WATER INLET**

3/8" O.D. Tubing into freeze-resistant box.

**DRAIN OUTLET**

1-1/4" waste outlet located in freeze-resistant valve system.

**SUGGESTED SPECIFICATIONS**

Fountain shall include pushbutton on the front, contour-formed basin to eliminate splashing and standing water, and shall have rounded corners and edges. Projector shall be chrome-plated vandal-resistant type with integral hood guard and anti-squirt feature. Fountain shall comply with ANSI 117:1 and ADA for visual and motion disabilities. The manufacturer shall certify the unit to meet the requirements of NSF/ANSI 61, and the Safe Drinking Water Act.

Note: Continued product improvement makes specifications subject to change without notice. See Halsey Taylor website for most current spec sheet.



Standard Finish is Stainless Steel

Each HRFEBP FR consists of 2 cartons of the following:

- Fountain, Panel and Misc. Parts
- Freeze-Resistant Valve System

Service stop not included.

Shipping weight: 50 lbs.

|                                 |
|---------------------------------|
| JOB NAME: _____                 |
| _____                           |
| ENGINEER/CONTRACTOR NAME: _____ |
| _____                           |
| APPROVAL: _____                 |
| DATE: _____                     |



# HRFEBP FR

## Freeze-Resistant Contour™ Barrier-Free Fountain With Back Panel

(CONTINUED)

### MOUNTING INSTRUCTIONS

Refer to diagrams for rough-in of freeze-resistant system and plumbing. Mount wall plate assembly to wall per the installation instructions. Hang fountain panel over the wall plate assembly. Attach fountain to wall plate assembly. Water service line and waste line are to be assembled as required. Final check for leaks and correct functions of fountain should be made. (For details see the installation instructions.)

**Freeze resistant box must be installed on interior non-freezing wall.**

**CAUTION — Fountain must be securely bolted to wall.**

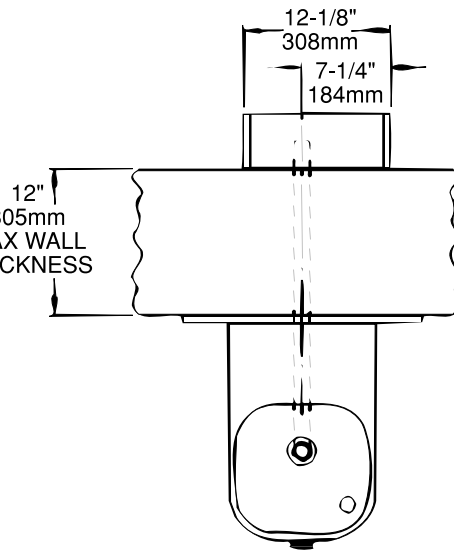
### OPERATING PRESSURES:

Supply water - 105 psi maximum

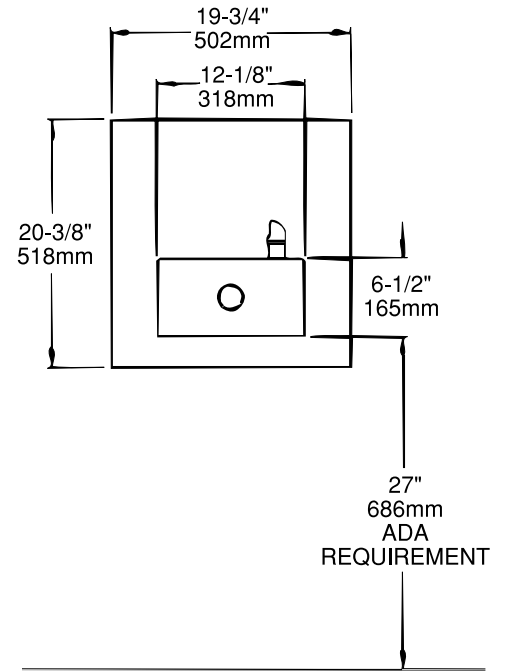
NOTE: A service supply stop (not included) must be installed at the fountain inlet line.

NOTE: For wall support required locations see installation instructions provided with panel and fountain.

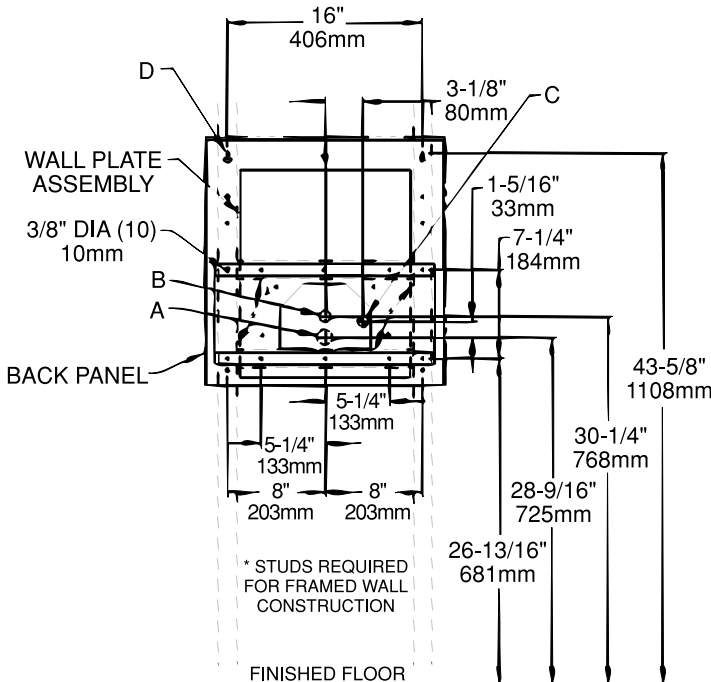
TOP VIEW



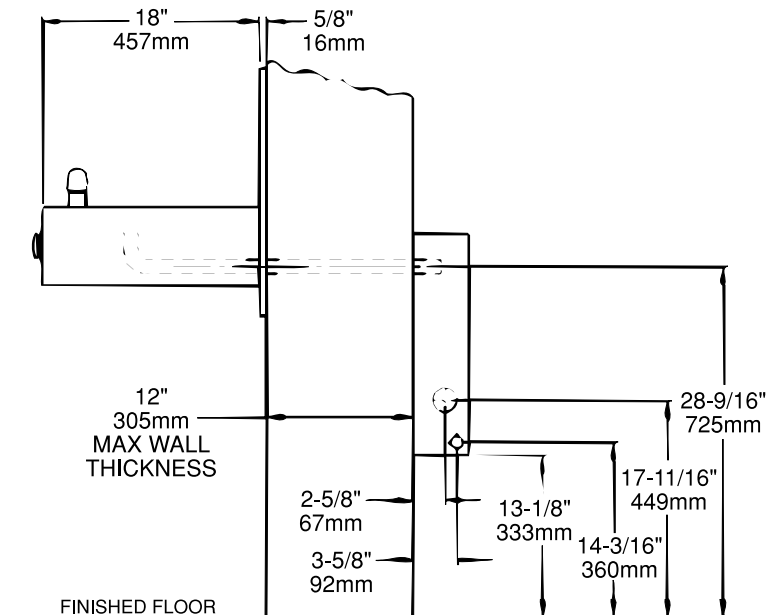
FRONT VIEW



WALL LAYOUT



SIDE VIEW



### LEGEND:

- A = 1-3/4" DIA (44mm) HOLE FOR WASTE LINE
- B = 7/8" DIA (22mm) HOLE FOR WATER SUPPLY TUBE
- C = 7/8" DIA (22mm) HOLE FOR OPERATING CABLE
- D = 1/4" DIA (6mm) HOLES FOR MOUNTING PLATE TO WALL

1-1/4" Trap included.

**Halsey Taylor®**